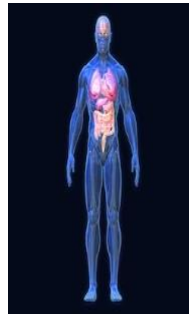


NL
HHS




Next Level Hospital
and Healthcare Solutions
Transforming Healthcare → Solutions for change



Customized Solution www.NextLevelHHSolutions.com

Next Level Hospital and Healthcare Solutions

TRANSFORMING HEALTHCARE  ***SOLUTIONS FOR CHANGE***

TURN KEY PROJECTS

BUILDING NEW

OR

RENOVATIONS OF HOSPITALS AND MEDICAL / IMAGING CENTERS

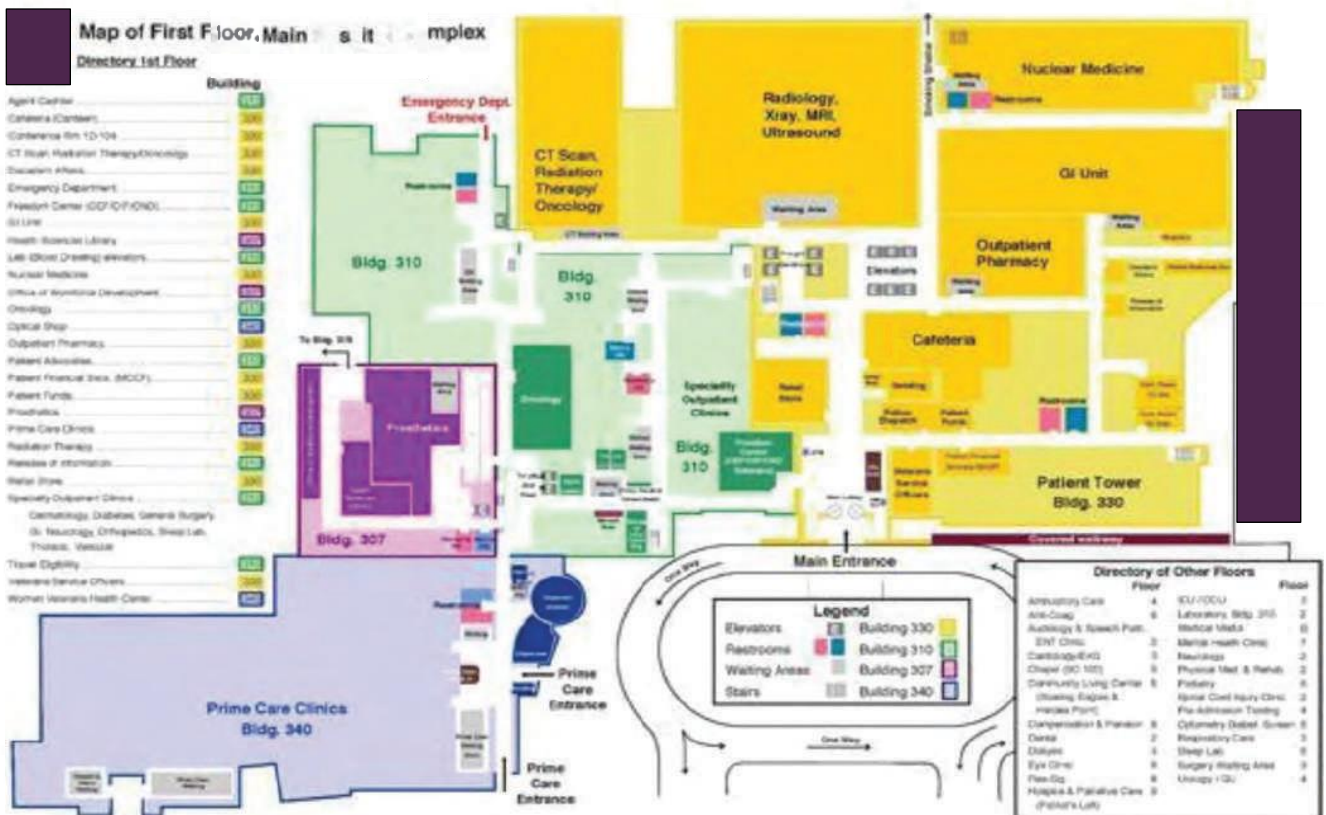
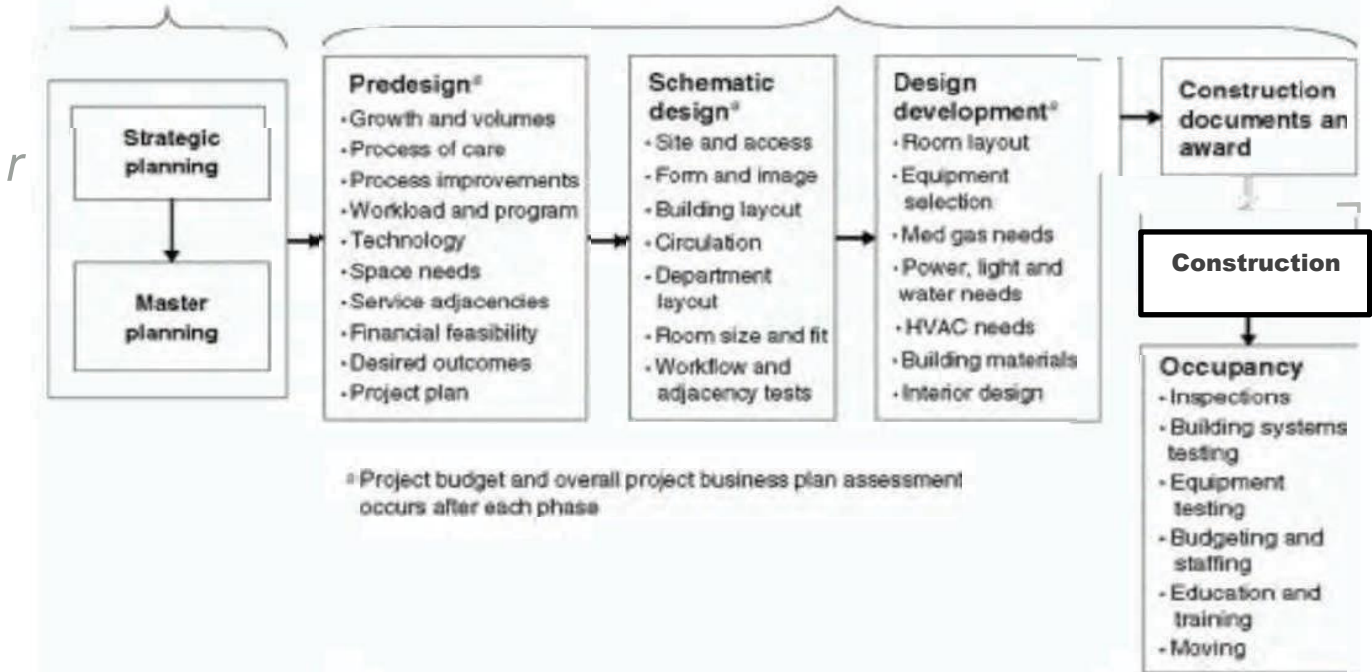
- **ARCHITECTURAL**
- **ENERGY EFFICIENCY**
- **WASTE MANAGEMENT**
- **IMAGING EQUIPMENT PROCUREMENT- NEW AND REFURBISHED.**

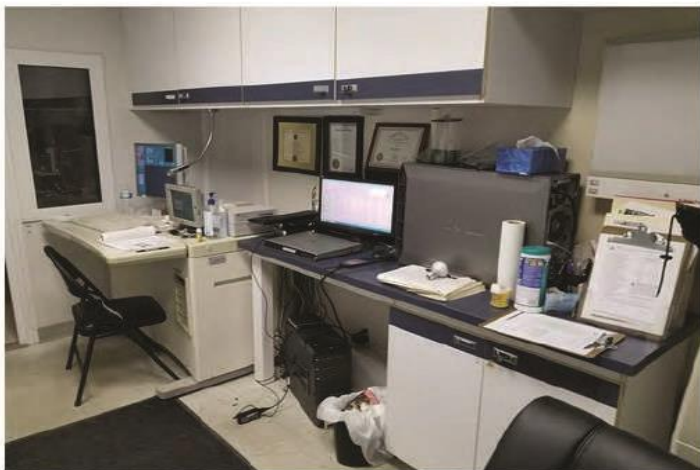
REFURBISHMENT PROCESS INCLUDE REPLACEMENT OF ALL NON-WORKING PARTS, CALIBRATION, CLEANING AND COSMETIC RESTORATION. ACCORDING TO ORIGINAL MANUFACTURER'S (OEM) SPECIFICATIONS.

- **INSTALLATION, FIRST SCAN WARRANTY AND APPLICATION TRAINING**
- **OEM CERTIFIED ENGINEERS**
- **SERVICE AND MAINTENANCE CONTRACT- LOCAL EXPERTS**
- **HEALTHCARE PROFESSIONAL RECRUITING AND MENTORSHIP**
- **ACCREDITED AND CERTIFIED HEALTHCARE CLINICAL EDUCATIONAL PROGRAM DEVELOPMENT**

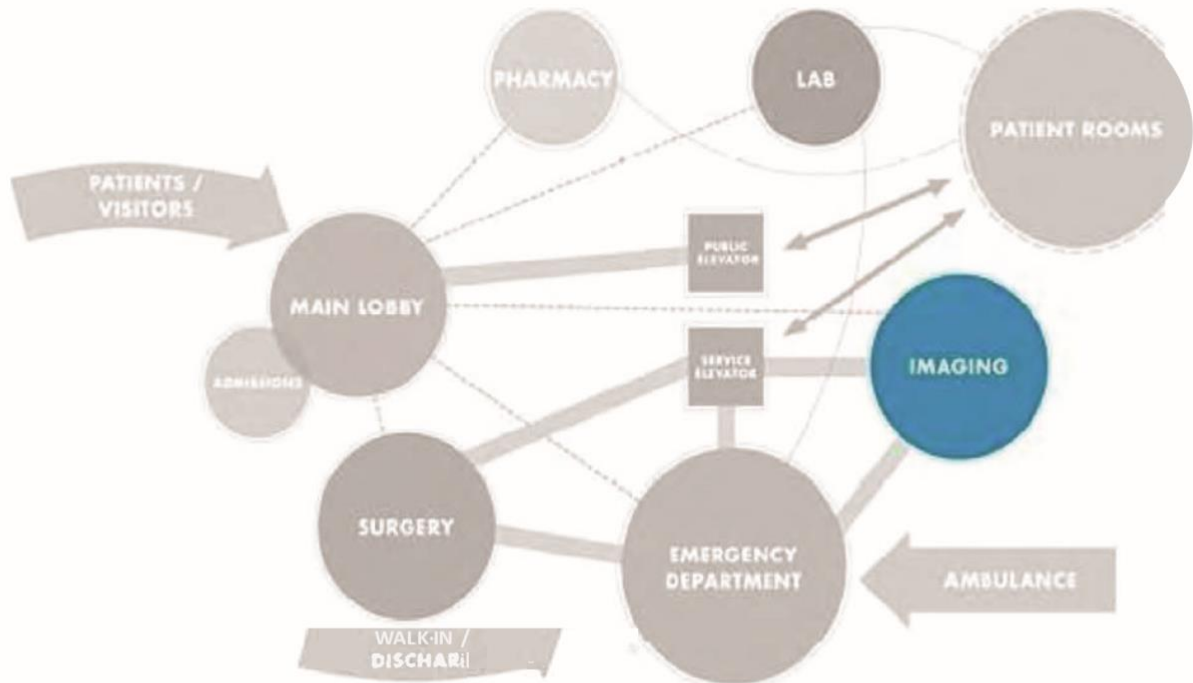
PLANNING , DESIGN AND CONSTRUCTION

Form the planning framework for the project



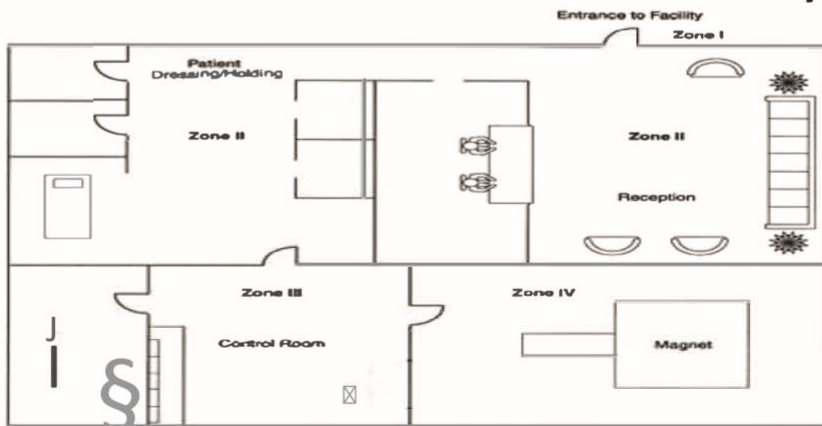


IMAGING DEPARTMENT PLANNING



This diagram illustrates the key departments in a hospital, the primary and secondary relationships that each department has to each other, as well as key entry points for patients. Using this diagram, it's easy to see how each department is positioned in relationship to others. For a typical imaging department, it is not located on exterior of the building near an entrance like an ED would be.

MRI Suite: ACR Safety Zones



The American College of Radiology has defined four safety zones within MRI facilities. These are denoted Zones I through IV and correspond to levels of increasing magnetic field exposure (and hence potential safety concern).

Zone I

All areas freely accessible to the general public without supervision. Magnetic fringe fields in this area are less than 5 Gauss (0.5 mT).

Zone II

Still a public area, but the interface between unregulated Zone I and the strictly controlled Zones III and IV. MR safety screening typically occurs here under technologist supervision.

Zone III

An area near the magnet room where the fringe, gradient, or RF magnetic fields are sufficiently strong to present a physical hazard to unscreened patients and personnel.

Zone IV

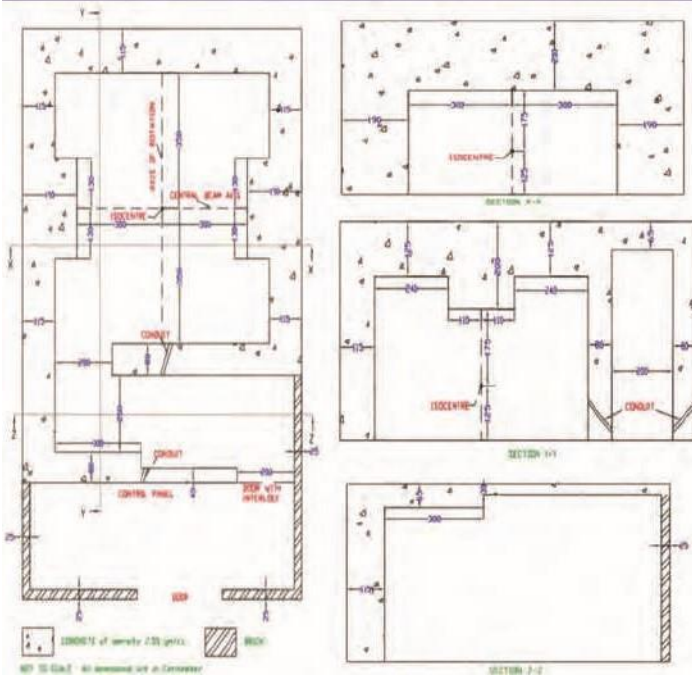
Synonymous with the MR magnet room itself. Has the highest field (and greatest risk) and from which all ferromagnetic objects must be excluded.



RADIATION ONCOLOGY CENTER FLOOR PLAN



TYPICAL LAYOUT OF 6 MV LINEAR ACCELERATOR



PRIMARY BARRIER

$$RF = WUT/Pd^2;$$

$$T = \log(RF) \times TVT$$

- $W = 1 \times 10^5 \text{cGy/wk}$
 $= 1 \times 10^6 \text{mGy/wk}$

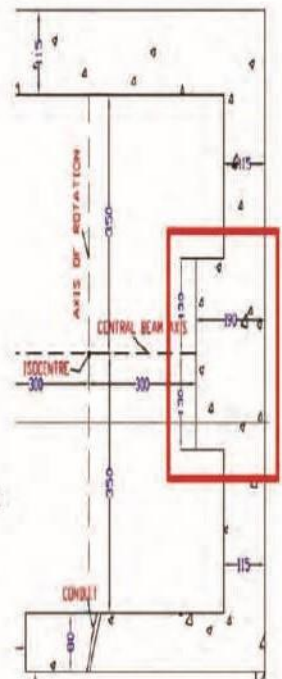
- $U = 1/4; T = 1;$

- $P = 0.02 \text{mSv/wk}$

- $d = (3.0 + 1.9 + 1.0) \text{m} = 5.9 \text{m}$

- TVT of concrete:

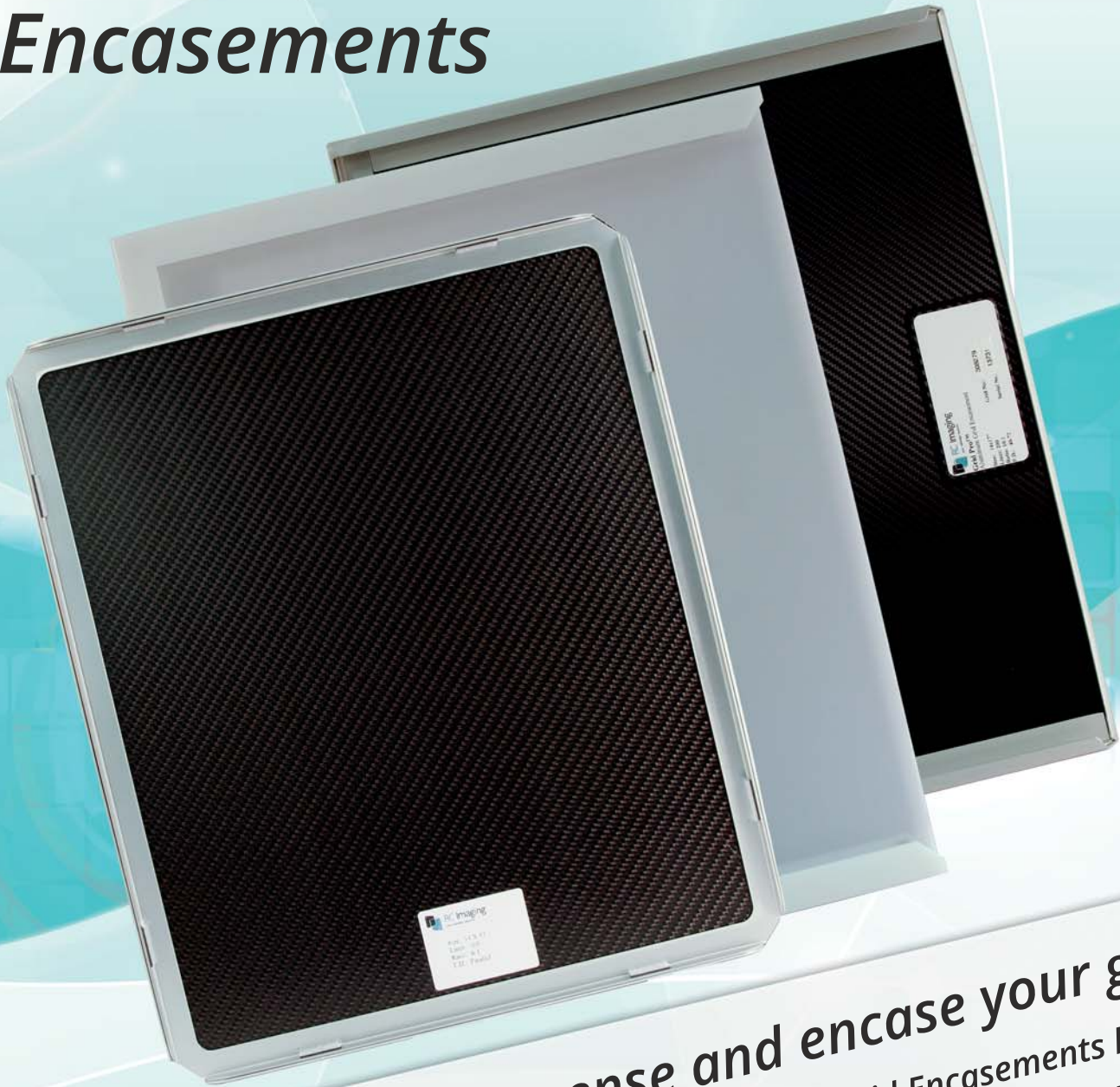
- $TVL_L = 37 \text{ cm}; TVL_E = 33 \text{ cm}$



INSTALLATION AND DEINSTALLATION PROCESS



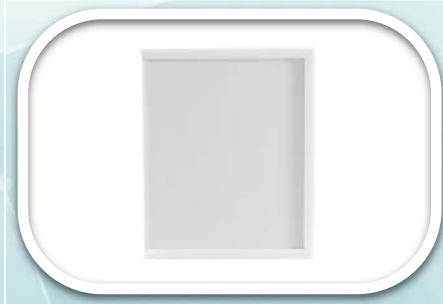
Grid Encasements



Avoid future grid expense and encase your grid!
Extend the life of your Grid by using one of our Grid Encasements built to your specifications. They are available in multiple sizes to meet your needs.

GridPro Grid Encasements

Polycarbonate with Channels GEC



Extreme Durability • Cassette slides easily in and out of channels
Minimal patient disruption during multiple exposures

Aluminum with Channels GECA



Vinyl coated target area for easy alignment and patient comfort
Reinforced welded corners • Minimal patient disruption during multiple exposures

Aluminum Drop-On Grid Cap GEDA



Vinyl coated target area for easy alignment and patient comfort
Open corners allow easy removal • Cost effective

Weight Bearing Protection



Our new Weight Bearing Protective Cover has been designed to accommodate Digital DR Panels and CR Cassettes.

Our covers are strong yet lightweight, offering a high degree of protection during weight bearing procedures.

Our latest cover is constructed of a high density polyethylene frame and a carbon fiber top, offering protection up to 1300 lbs. Our easy lift handle makes removal and carrying a breeze.

The Weight Bearing Cover has been tested by an accredited independent laboratory.



Weight Bearing Protection



Smoked Polycarbonate



Carbon Fiber

- Available in Polycarbonate or Carbon Fiber
- Rated up to 1300 lbs.
- Easy lift handle
- Non-skid rubber feet
- Multiple sizes available
- Printed target area

This product is perfect for bariatric, equine, and podiatry procedures.



Easy Lift Handle

Protect your *investment* use a **COVER!**

Weight Bearing Platforms



Our Weight Bearing Platforms are designed to accommodate digital DR Panels, CR and Analog Cassettes.

These products are designed for easy mobility and stability while allowing for easy weight bearing imaging on the foot, ankle and knee.

Our Weight Bearing Platforms are constructed of high density HDPE plastic and stainless steel.

Weight Bearing Platforms

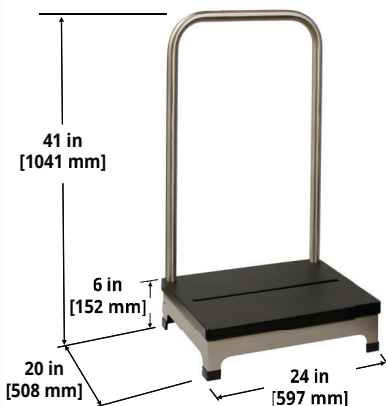


Weight Bearing Platform Benefits

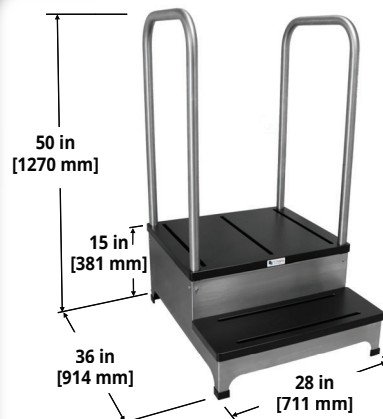
- Anti-slip platform
- Multiple detector slots for positioning
- Medical grade stainless steel rails for patient stability
- Rear mounted offset casters for easy relocation
- Non-skid rubber feet
- Simple cleaning and sterilization

Additional Complete View Benefits

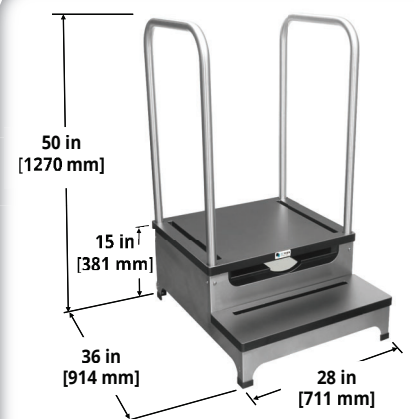
- Allows for Lateral, AP and other anatomical views from a single patient position
- Attenuation and construction fully tested
- Lock-N-Secure® II Panel Protector included
- Accommodates 14"x17" and 17"x17" Panels



Product Weight: 45 lbs [20 kg]
Weight Capacity: 750 lbs [340 kg]



Product Weight: 130 lbs [60 kg]
Weight Capacity: 750 lbs [340 kg]



Product Weight: 130 lbs [60 kg]
Weight Capacity: 750 lbs [340 kg]

Clinical and Diagnostics Equipment

Cosmetic | Plastic Surgery

- All Cosmetic | Plastic Surgery Equipment
- Cosmetic Prosthetics

Cryogenic

- All Cryogenic Equipment
- Cryocoolers | Cryogenic Refrigerators
- Cryosurgery Devices

Dental

- All Dental Equipment
- Dental **Apex** Locators
- Dental Compressors
- Dental Sterilization
- Dental Suction Systems
- Gutta Percha Obturators
- Intraoral Cameras
- Intraoral Sensors

Dermatology

- All Dermatology Equipment
- Dermatoscopes

Ear, Nose and Throat (ENT) / Otolaryngology

- All Ear, Nose and Throat (ENT) / Otolaryngology Equipment
- Acoustic Booths and Audiocups'
- Audiometers
- Behind the Ear Aids
- Bone Anchored Hearing Aids
- Bronchoscopes
- Conventional **Laryngoscopes**
- In the Ear Aids
- Nebulizers
- Oscopes | Auriscopes

Emergency Medicine

- All Emergency Medicine Equipment
- Aspirators
- Blood Warmers
- Defibrillators - AED
- Electromyograph Machines (EMG)
- EtCO2 modules
- Infusion Pumps
- Medical Ventilators
- Point of Care Medical **Systems**
- Pressure Infusers
- Resuscitators
- Vital Signs Monitors

Endoscopy

- All Endoscopy Equipment
- Bronchoscopes
- Colposcopes
- Conventional Laryngoscopes
- Endoscopes
- Hysteroscopes
- Sigmoidoscopes

General Practice

- All **General Practice** Equipment
- Reflex Hammers
- Stethoscopes

General Surgery

- All **General Surgery** Equipment
- Chest Drainage Systems
- CPAP Systems
- Curettes
- Oxygen Concentrators
- Smoke Evacuators
- Surgical Drills
- Surgical Laser

Clinical and Diagnostics Equipment

Hematology

- All Hematology Equipment
- Apheresis Machines
- Arterial Filters
- Bilirubin Analyzers
- Blood Bag Tube Thermosealers
- Blood Bank Refrigerators
- Blood Coagulometers
- Blood Collection Monitors
- **Blood Gas Analyzers**
- Blood Glucose Monitors
- Blood Plasma Freezers
- Blood Pressure Monitors
- Blood Samplers
- Blood Warmers
- Dialysis Machines
- Hematology Blood Analyzers
- Hemoconcentrators
- Hemofiltration Machines
- Hemoglobin meters
- Point of Care Medical Systems
- Pulse Oximeters
- Venous Reservoirs

Imaging

- All Imaging Equipment
- Bone Densitometers
- CT Scanners
- Fluoroscopy Systems
- Intraoral Cameras
- Mammography Systems
- Micro-CT Scanners
- MRI Scanners
- Optical Imaging Systems

Laboratory

- All Laboratory Equipment
- Bacterial Viral Filters
- Blood Bank Refrigerators
- Cell **Analysis** Systems
- Cell Counters
- Cryogenic Refrigerators
- **Electroelution Systems**
- Inhalation Exposure Systems
- Laboratory Centrifuges
- Laboratory Incubators
- Microinjection Systems
- Micromanipulators
- Microtomes
- PCR Machines
- Pipetting
- Real-Time PCR **Systems**
- Syringe Filters
- Tissue Processor
- Transilluminators

Microscopy and Laboratory Microscopes

- All Microscopy and Laboratory Microscopes
- Equipment
- Microtomes
- Neurosurgical Microscopes
- Ophthalmic Surgery Microscopes

Nephrology

- All Nephrology Equipment
- Dialysis Machines
- Lithotripters

Clinical and Diagnostics Equipment

Neurology

- All Neurology Equipment
- Nerve Monitoring Systems
- Nerve Stimulators

Obstetrics | Gynecology

- All Obstetrics / **Gynecology** Equipment
- Birthing Pools
- Breast Pumps
- Catheters
- Colposcopes
- Curettes
- **Fetal** Dopplers
- **Fetal** Monitors
- **Hysteroscopes**
- Pessary
- Pregnancy Tests
- Vaginal Specula

Ophthalmology

- All Ophthalmology Equipment
- Corneal Topography Systems
- Keratometers/Ophthalmometers
- Keratoscopes
- Lens Blockers
- Ophthalmic Perimeters
- Ophthalmic Surgery **Microscopes**
- Ophthalmoscopes
- Phoropters & Refractors
- Photocoagulators
- Pupil Distance Meters
- Retinoscopes
- Tonometers
- **Videonystagm**oscopes

Patient Handling

- All Patient Handling Equipment
- Heat Therapy Systems

Pediatrics

- All Pediatrics Equipment
- Baby Weighing Scale
- **Fetal** Doppler
- **Fetal** Monitors
- Infant Incubators
- Pediatric Prosthetics

Physiotherapy

- All Physiotherapy Equipment
- Pressotherapy Systems
- Shockwave Therapy Systems
- Vacuum Therapy Units

Prosthetics

- All Prosthetics Equipment
- Acetabular Prosthetics
- Cosmetic Prosthetics
- Pediatric Prosthetics
- Protheses for Hernias
- Prosthetic Feet
- Prosthetic Knees
- Vascular Prosthetics

Radiology

- All Radiology Equipment
- Mammography **Systems**
- MRI Scanners
- X-Ray **Imaging Systems**

Clinical and Diagnostics Equipment

Spectroscopy

- All Spectroscopy Equipment
- NMR **Spectrometers**

Spinal and Orthopedic

- All Spinal and Orthopedic Equipment
- Acetabular Prosthetics
- **Femoral** Stems
- Pediatric Prosthetics
- Prosthetic **Feet**

Ultrasound

- All Ultrasound Equipment
- **Fetal** Dopplers
- Ultrasound Machines

Urology

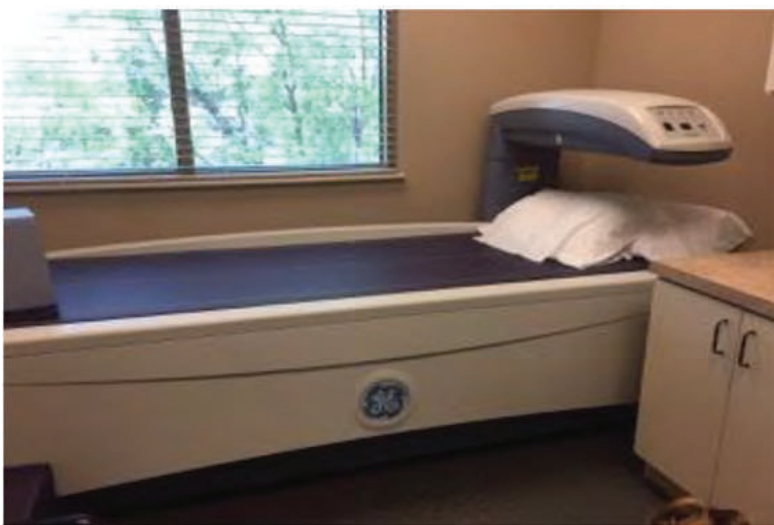
- All Urology Equipment
- Resectoscopes
- Urine Analyzers



Clinical and Diagnostics Equipment



OEC 9800 Plus Cardiac and Vascular C-Arm



GE Prodigy Primo Full-Bone Densitometer

- Prodigy Primo Full
- AP Spine, Femur, Dual Femur, Total Body BMD, Forearm, OneVision, Composer, DVA
- Prodigy Business **Desktop PC**
- 17" LCD Monitor
- Lunar Standard Printer

Clinical and Diagnostics Equipment



GE Essential
Mammography System



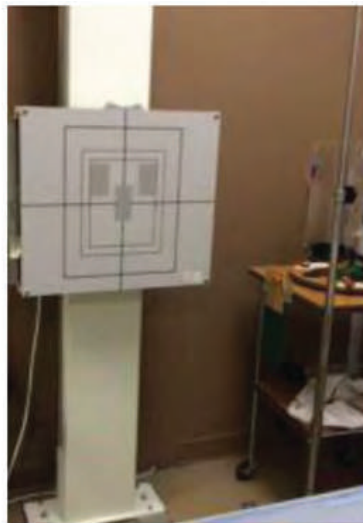
Hologic Lorad M IV Platinum
Mammography System

Clinical and Diagnostics Equipment



GE AMX IV **Portable** X-Ray

- Reinforced Base
- 100 mA Constant
- kVp 50-125, mAs 0.4-320, 24 kVp Stations
- 30 mAs Stations
- X-Ray Tube MX-75 275k HU
- Focal Spot .75mm
- Dual Motor Drive (Forward & Reverse)
- Variable Speed Drive



GE Silhouette Rad Room with 2011 Konica CR

- HF Generator
- Integrated Tube Stand
- Wall Stand
- 2011 Konica 110 CR System running Windows XP
- 4 14X17 plates and 3 10X12 plates
- Agfa Drystar 5500 Printer

Clinical and Diagnostics Equipment



**Dialysis
Chairs**



**Fresenius-
2008K-
Dialysis
Units**



**GAMBRO
The Prismaflex®
System**

**Flexibility that meets the
strict demands of multiple
blood purification
therapies**

Clinical and Diagnostics Equipment



Voluson S8

The Voluson S8 is a mid-level 4D specific ultrasound system from GE that is their smallest and most lightweight non portable. It is almost identical to the less powerful Voluson S6. Both the S6 and S8 are the replacements for the venerable Voluson 730 pro and expert respectively. They offer imaging power similar to the Voluson 730 but with larger LCD screens and the loss of several hundred pounds of bulk!



APPLICATIONS

1. Obstetrics
2. Gynecology
3. Fetal Cardiac
4. Fetal Heart

IMAGING MODES

1. 3D
2. 4D
3. Dual-view
4. Anatomical M-Modes

FEATURES

1. 19" LCD Monitor
2. Advanced SRI (Speckle Reduction Imaging)
3. CrossXBeam
4. HD-Flow
5. Advanced VCI (Volume Contrast Imaging)
6. SonoNTTM
7. HD-Zoom
8. TUI (Tomographic Ultrasound Imaging)
9. 4D View
10. STIC (Spatio-Temporal Image Correlation)
11. SonoVCADTM heart
12. SonoAVCTM follicle
13. Electrography

FEATURES(Continued)

14. SonoVCAD labor
15. SonoRender Start
16. ViewPoint reporting and image management
17. DICOM
18. EMR compatible
19. Scan Assistant
20. Raw Data
21. Wireless connectivity
22. SDMS ergonomic design
23. USB Ports
24. InSite Remote Diagnostics

PROBES

1. Convex Probe C1-5-RS (2 - 5 MHz)
2. Linear Probe 12L-RS (4 - 12 MHz)
3. Convex Probe 4C-RS (2 - 5 MHz)
4. Convex Probe AB2-7-RS (2 - 8 MHz)
5. Endocavitary Probe E8C-RS (4 - 10 MHz)
6. 4D Convex Probe RAB4-8-RS (2 - 8 MHz)
7. 4D Endocavitary Probe RIC5-9W-RS (4 - 9 MHz)

Clinical and Diagnostics Equipment



Siemens Acuson Cypress Plus - VER.20

Installed Options: Stress Echo, Advanced Triggering, Networking, IMT Protocol. ECG Cables and TEE Adapter also included .

Transducers:

3V2c Phased Array for Cardiac

TE-VSMs Transesophageal for Cardiac

7L3 Linear Array for Vascular (slight discoloration on lens) If we are to get another 7L3 linear that would be an additional cost.

Clinical and Diagnostics Equipment



COULTER® Ac-T™ 5diffAL (Autoloader)

Automated Sample Processing for Walkaway Efficiency

The Ac-T 5diffAL improves sample handling by eliminating manual sample loading, which also saves time, lowers operational costs and increases your lab's overall workflow efficiency. Also included is an easy-to-use data management system that streamlines data recall and requires less manual manipulation.



Beckman Coulter

AU680

The newest member of the high-performance Beckman Coulter laboratory analyzer series is the AU680 Chemistry System. Based on in-depth customer consultation, the AU680 Chemistry **System** is intended to help medium to high throughput laboratories meet ever increasing pressures on time and product.

SAMPLE ANALYSIS CHARACTERISTICS -

100-sample autoloader - Closed- or open-vial sampling via manual (stat) mode - 53 µL whole blood **CBC/diff Mode - 30 µL** whole blood CBC-only Mode - Internal, and optional external, bar code reader

DATA MANAGEMENT - Auto-sequen ce run number available - 20 patient ranges with 5 programmable ranges for gender and age flagging - Data storage for 10,000 patients - 20 result action ranges with interpretive messages - On-board Help files - 24 Control files - RS232 host transmission

WBC	RBC
NE#	Hgb
NE%	HCT
LY#	MCV
LY%	MCH
MO#	MCHC
MO%	RDW
EO#	PLT
EO%	MPV
BA#	PCT*P
BA%	DW
ATL#*	
ATL%*	
IMM#*	
IMM%*	



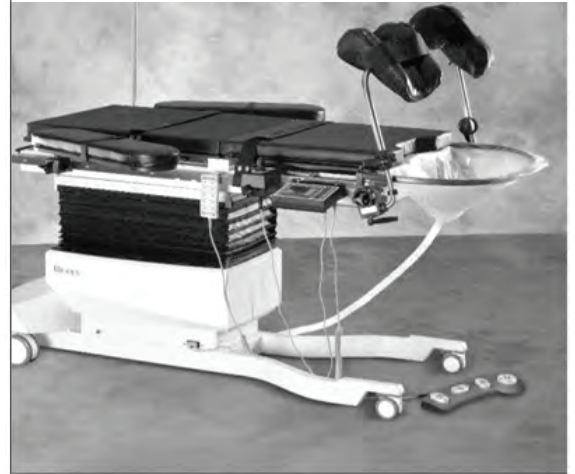
- [Adrenal /Pituitary](#)
- [Allergy](#)
- [Anemia](#)
- [Anticoagulant Therapy](#)
- [Autoimmune](#)
- [Bleeding Disorders](#)
- [Bone Metabolism](#)
- [Cardiovascular](#)
- [Diabetes](#)
- [Drugs of Abuse](#)
- [Endocrine Function](#)
- [Fibrinolysis](#)
- [General Chemistry](#)
- [Hematology](#)
- [Hepatic](#)
- [Infectious Disease](#)
- [Inflammatory](#)
- [Nutritional Assessment](#)
- [Oncology](#)
- [Prostate Health](#)
- [Proteins/Serology](#)
- [Renal Function](#)
- [Reproductive](#)
- [Sepsis](#)
- [Specialty](#)
- [STAT Testing](#)
- [Therapeutic Drug Monitoring](#)
- [Thrombophilia](#)
- [Thyroid](#)
- [Toxicology](#)
- [Tumor Markers](#)

Clinical and Diagnostics Equipment

Family Practice Exam Table



UROLOGY-ARM TABLE



Welch Allyn Green Series™ 777 Integrated Wall System

Allows for reliable diagnostic patient data in a standardized and energy-efficient solution to improve your bottom

Clinical and Diagnostics Equipment

Gomco Portable Aspirator



The **Gomco** portable aspirator is indicated for the delivery of high-performance suction at any time. Highly versatile and compact, they can be used in multiple clinical settings, from the emergency room to the recovery room. A carbon rotary vane design makes them low maintenance.

The self-contained aspirators protect against contamination of motor and gauge to allow for easy cleanup. The high vacuum and flow provide immediate high-performance suction, having an output range of 0" to 25" Hg vacuum and a liter flow rate of 30U/min. Aspirators come with either a 1200ml glass bottle or 1500ml disposable canister, which allows the user to meet individual requirements.

B-life - Silicon Resuscitator from Spencer

The new B-life resuscitators are made from very resistant materials, silicon and polysulphonate that guarantee exceptional durability. The new form of the self-expanding resuscitator guarantees great flexibility, re-expansion of the resuscitator, versatility, ease of use and reliability. The dead space of the valve is only 8 ml. All of the parts are completely autoclavable. The diameter of the connection ISO 15/22 mm. All of the models are supplied with transparent patient valve with swiveling connector, self locking connection to avoid accidental disconnections, characterized by a small dead space

They can be supplied with

- Easily removed pressure limiting valve
- Transparent oxygen reservoir valve, which supplies a higher oxygen concentration (up to 97%) and minor oxygen consumption
- Disposable reservoir bag for the administration of oxygen
- Face mask

- PEEP valve

Available in the following versions:

- Adult: for patients over 30 kg [66 lbs]
- Pediatric: for patients between 7 and 30 kg [between 15 and 55 lbs]
- Neonatal: for patients under 7 kg [15 lbs]

Clinical and Diagnostics Equipment

Evita XL Ventilator from Draeger

The new Evita XL ventilator combines a broad range of performance capabilities with many advanced features. So whatever the patient's acuity level ventilating adults, pediatrics or even premature babies, the new Evita XL offers state of the art invasive or non invasive ventilation.

At the patient bedside :

- Advanced standard functions and a wide range of options
- More efficient daily routine through focus on essentials and intuitive operation

Throughout the hospital:

- Easy and convenient handling in almost every transport situation thanks to newly designed trolley
- Improved staff efficiency and lower training and support costs thanks to standardization



Clinical and Diagnostics Equipment

Defibtech Automatic External Defibrillator



Defibtech introduces the newest generation Automatic External Defibrillator (AED). Now there is something you can do to improve the odds dramatically with a solution that is both easy to use and extremely affordable.

For first response professionals like police, fire and EMS, the Defibtech AED is standard equipment. For schools, offices, stores, factories, gyms, and public places, it's becoming as vital as the fire extinguisher.

Sudden Cardiac Arrest (SCA) kills more than 33,000 people in Australia each year.

It can strike anyone, anywhere, at any time and in most cases, without warning.

Without treatment, victims have only minutes to live. With quick response, this condition is readily treatable with survival rates well over 50%. Unfortunately most of the time, the necessary life-saving equipment does not arrive in time. As a result, typical survival rates are only 2%-5%.



Physio-Control Lifepak 12



GE Mac 5500

12-lead and 15-lead system for stress testing and resting ECGs.

Complete suite of analysis algorithms for advanced ECG applications.

Industry-leading settings, algorithms, and advanced networking.

Clinical and Diagnostics Equipment

Timeless excellence CARESCAPE* V100 - Vital Signs Monitor

The GE **DINAMAP*** non-invasive **blood pressure (NIBP) monitor** is known globally by many clinicians, nurses and biomedics as a quality tool to automatically measure and monitor blood pressure, to help improve patient safety and clinical outcome.

The **CARESCAPE V100 vital signs monitor** continues GE **Healthcare's** legacy of innovation in NIBP measurement with the excellence of

GE **Healthcare's** most recent algorithms. Built with an open **architecture**, it gives you access to innovative **technologies for vital signs monitoring**. In your demanding health care environment, where you need to treat a variety of patients, with a high generation of medical data, this technology innovation helps your clinical staff to **provide** more accurate patient care and helps you to **improve** your patient's **comfort** and **satisfaction**.



Simple and
Reliable
For your
Medical
Team

Clinical and Diagnostics Equipment

Ritter M9 UltraClave® Automatic Sterilizer



Overall length w/plug: 20.4" (51.8 cm)
Overall width: 15.3" (38.9 cm)
Overall height w/printer: 15.8" (40.1 cm)
Minimum Countertop area: 15.3" x 17.9" (38.9 cm x 45.4 cm)
Chamber:
9" diameter (22.9 cm)
15" depth (38.1 cm)
3.5 gal. usable volume (13.4 liters)
Trays:
Two large - 7.3"
W x 12" L x .8" D
(18.6 cm x 30.5 cm x 2.2 cm)
Two small - 5.6" W x 12" L x .8" D
(14.3 cm x 30.5 cm x 2.2 cm)
Unit weight: 73 lbs. (33.1 kg)
Shipping weight: 81 lbs. (36.7 kg)
Water **reservoir capacity**: 1.1 gal. (4.1 liters)
Electrical Requirements
115 VAC, 50/60 Hz, 15 Amps Single **Phase**
115 VAC has 1425 watt tubular immersion heater

Safety Standards

UL61010-1, UL61010-2-040
CAN/CSA C22.2 No. 61010-1
CSA C22.2 No. 61010-2-040-07 Part 2-040
Meets the requirements of ASME Boiler and Pressure **Vessel Code**
Canadian **Registration Number (CRN)** available
A **separate** (dedicated) circuit is recommended for this **sterilizer**

Clinical and Diagnostics Equipment

Plum A+ Infusion System from Hospira



With more than 325,000 pumps **installed** worldwide, the Plum A+™ general **purpose** infusion **system** remains the proven choice for caregivers and clinicians alike. The scalable platform can be initially deployed, and later upgraded to include Hospira MedNet™ **safety software** to meet your evolving patient care needs. The unique, innovative PlumSet™ **cassette** technology and time-saving features **simplify** medication delivery and help to enhance **safety** for patients, clinicians and caregivers.

Deliver infusions with confidence with the unique PlumSet™ technology

- Automated **second-line** delivery- eliminates the need to **raise** and lower infusion containers, improving **ease-of-use** and efficiency
- Concurrent delivery of 2 medications through a single patient line
- Air-in-Line detection and elimination- air trap captures up to 2 mls of air
- Accumulated air can be removed by automated back-priming without disconnecting the patient line, reducing the risk of contamination
- Deliver **secondary** infusions via IV container or **syringe**

Clinical and Diagnostics Equipment

Sierra II Wedge E MG/ NCV/ E P Instrument



If portability is a requirement, the Sierra II Wedge is the preferred instrument. The base unit weighs just 6 lbs. A high performance laptop computer runs the **software**. It comes with a **soft** carrying case that meets airline carry-on requirements.

For permanent locations, the Sierra II Console is the best choice. This system is set up with a desktop computer, LCD monitor and printer and our custom designed cart.

The keyboards on both instruments are familiar and intuitive. A hand held electrical stimulator, footswitch, 2 or 4-channel amplifier, amp cable and all necessary **software** are included. Optional auditory, visual and electrical evoked potential stimuli capabilities are available to expand the functionality.



Hospital Beds



Locked Medical **Cart**



BL-100 Blood Bank Refrigerator

RECOMMENDED EMERGENCY MEDICAL SERVICES EQUIPMENT LIST

Personal Protection

- Full Peripheral Eye Protection Or Goggles, Face Shields for all Attendants
- Face Protection -i.e. Surgical Masks
- Respiratory Protection Approved by Physician Medical Director
- Disposable Synthetic Gloves for all Attendants J Disposable Biohazard Bags For Non-Sharp Waste
- Standard Sharps Container Both Fixed and Portable
- Disinfectant For Solution for Cleaning Contaminated Equipment
- Waterless Hand Cleaner, Commercial Antimicrobial (Towelette, Spray, or Liquid)
- Fluid Resistant Overalls or Gowns

Patient **Assessment/Diagnostic** Measurements

- Stethoscope in Sizes to Accommodate all Patients
- Blood Pressure Cuffs in Sizes to Accommodate all Patients
- 2 Patient Care Flashlights
- Thermometer(s) with Low Temperature Capability
- Scissors for Cutting Clothing, Belts, and Boots J Length Based Resuscitation Tape or Reference Material that Provides Appropriate Guidance for Pediatric Equipment Sizing and Medication Dosing
- Pulse Oximeter with Appropriate Adult and Pediatric Probes

Suction **Equipment**

- Suction Aspirator Capable of Minimum Vacuum of 300 Milliliters of Mercury, with Continuous Negative Pressure to the Patient- If the Suction Unit is an Integral Part of the Ambulance, a Portable Mechanical Aspirator with Catheter(s) Must Also be Provided
- Wide Bore Tubing
- Rigid Tip Catheters
- French 6f-16f Catheters – At Minimum One Between 6f-10f and One Between 10f-16f
- Bulb Suction for Infants with Saline Drops

Airway Management

- Pocket Mask with One-Way Valve and Oxygen Inlet
- Disposable Oropharyngeal Airways in Appropriate Adult, Child, and Infant Sizes (00-5)
- Disposable Nasopharyngeal Airways in Adult and Child Sizes (12f-34f)
- Water Soluble Lubricant
- Bag Valve Masks (BVM) in Adult, Child, & Infant Sizes Equipped with Operable Pressure Relief Valves and Transparent Masks, with Oxygen Reservoir/Accumulator. The Pediatric BVM Shall Have Masks for Neonate, Infant, and Child.
- Single Use, Transparent, Non-Rebreather Oxygen Masks in Adult and Pediatric Sizes
- Nasal Cannulae in Adult and Pediatric Sizes
- Permanent Oxygen Unit, Placed in a Permanent Mounting, with a Minimum Capacity of 1500 Liters and Equipped with a Reduction Gauge and Flow Meter Equipped with Reduction Gauge and Flow Meter
- Portable Oxygen Unit, with a Minimum Capacity of 300 Liters, Capable of Delivering Oxygen Flows of at Least 15 Liters per Minute and Equipped with a Yoke, Pressure Gauge, and Flow Meter.
- Spare Portable Oxygen Tank of at Least 300 Liter Capacity

Bleeding Control and Wound Management

- Abdominal Trauma Dressing
 - Sterile Gauze in Various Sizes
 - Gauze Rolls in Assorted Sizes
 - Triangular Bandages
 - Occlusive Dressings or Equivalent
 - Sterile Water or Saline Solutions for Irrigation
- ## Arterial Tourniquet
- Sterile Burn Sheets or Medical Director Approved Burn Care Supplies
 - Adhesive Tape
 - 1" & 2" Hypoallergenic
 - 1" & 2" A

RECOMMENDED EMERGENCY MEDICAL SERVICES EQUIPMENT LIST

Immobilization

- Rigid Cervical Immobilization Devices in Appropriate Adult, Child, and Infant Sizes
- Head Immobilization Device (NOT SANDBAGS) - Firm Padding OR Commercially Available Device
- Upper and Lower Extremity Immobilization Device(s): J Ridged or Vacuum Splinting that Will Provide Support Constructed from Radiolucent Material with the Ability to Immobilize Above and Below Appropriate Fracture Site in Appropriate Adult and Child Sizes
- Lower Extremity Traction Splint in Appropriate Adult and Child Sizes
- Impervious Radiolucent Long Backboard with 3 Straps J Short Backboard with Straps. This Device is Capable of Immobilizing the Head, Neck, and Spine
- Pediatric Spinal Immobilization Device
- Pelvic Stabilization Equipment Approved by Service Physician Medical Director

Cardiac Other Medical Care

- One Automatic or Semi-Automatic External Defibrillator
- Age Appropriate Defibrillator Pads

Care of Ingested Poisons

- Physician Medical Director Approved Treatment Policies
- These Could Include Supportive Measures

Obstetrics and Gynecology

- Commercially Available Comprehensive OB Kit; OR
- OB Kit Separate Sterile Kit Including:
- Towels
- 4x4 Dressings
- Cord Clamps And Ties
- Sterile Scissors or Other Cutting Utensil
- Bulb Suction
- Blanket
- Thermal Absorbent Blanket and Head Cover
- Appropriate Heat Reflective Material to Cover Infant
- Sterile Gloves

Communication

- Two-Way Communication Between Ground Ambulance, Dispatch, And Medical Control, and Receiving Facility-i.e. Cell Phone, Mobile Radio, etc.

Medications

- Approved By Physician Medical Director

Miscellaneous Equipment

- Device Capable for Pediatric Immobilization
- Ocular Irrigation Device
- Hot Pack(s)
- Cold Pack(s)
- Triage Tags
- Emesis Bags/Basin
- Urinal
- Bedpan
- ANSI II Reflective Vests for all Members Responding
- DOT Emergency Response Guide

Extrication Equipment – Suggested for EMS Services that do not have a Fire Department or Specialized Rescue Team or Organization Responding to All Motor Vehicle or Farm Related Incidents.

- Hacksaw with Extra Blade
- Phillips Screwdriver
- Regular Screwdriver
- Pliers
- Adjustable Wrench
- Hammer
- Chisel(s)
- Tin Snips
- Crow Bar or Mechanized or Mechanically Operated Air or Hydraulic Shears
- ABC Fire Extinguisher, 2A 10BC Minimum Rating
- Leather Gloves for Extrication Transport Equipment- Not Required for Agencies Licensed as Non-Transport
- Wheeled Ambulance Cot with Mattress and Three Restraints, including One Additional Set to Restrain over the Shoulder
- Stair Chair or Carry Chair
- Infant Car Seat or Commercially Available Pediatric Securing Device

RECOMMENDED EMERGENCY MEDICAL SERVICES EQUIPMENT LIST

- Blankets
- Sheets – At Least One Change per Cot
- Pillows
- Towels

Additional Equipment – If Approved by Physician

Medical Director

- Glucometer with Reagent Strips and Single-Use Lancets
- CPAP Equipment
- Nebulizer Equipment
- Equipment to Capture Out-Of-Hospital 12 Lead
- Advanced Airway
- If Monitoring IV Solutions, Intravenous Fluid Bag Pole or Roof Hook

Airway and Ventilation

- Video Laryngoscopy Capability – King Vision (Will Replace Adult Laryngoscope Blade), Glide scope, etc.; OR J Laryngoscope Handle with Extra Batteries and Bulb
- Laryngoscope Blades, Sizes:
 - 0-4, Straight (Miller), and
 - 1-4, Curved
- Endotracheal Tubes
 - 2.5mm-8.0mm (1 Each, Including Half Sizes)
 - 10ml Non-Luer Lock Syringes
 - Stylettes For Endotracheal Tubes, Adult and Pediatric
 - Magill Forceps, Adult and Pediatric
 - End-Tidal CO₂ Detection Capability, Adult and Pediatric
 - Rescue Airway Device - (i.e. King LT, Combi-Tube, Etc.) Both Adult and Pediatric Sizes
 - Needle Cricothyrotomy Capability and/or Cricothyrotomy Capability
 - Nasogastric Tubes

Other Equipment

- Nebulizer
- CPAP Equipment
- Soft Restraints
- Glucometer with Reagent Strips and Single-Use Lancets
- Should be at Least 3.25" in Length for Needle Decompression in Large Adults

- Long, Large-Bore Needles or Angiocatheters

Vascular Access


- Isotonic Crystalloid Solutions
- Antiseptic Solution
- Alcohol Wipes or Povidone-Iodine Wipes Preferred
- Intravenous Fluid Bag Pole or Roof Hook
- Intravenous Catheters, 14G-24G
- Intraosseous Capabilities (Intraosseous Needles; OR J Devices Appropriate for Placing Intraosseous Needles) Syringes of Various Sizes
- Venous Tourniquets
- Needles, Various Sizes (Including Appropriate Sizes for Intramuscular Injections)
- Intravenous Administration Sets (Micro drip and Macro drip)
- Intravenous Arm boards, Adult and Pediatric

Cardiac


- Portable, Battery Operated Monitor/Defibrillator
- With-Tape Write-Out Recorder, Defibrillator Pads, Quick Look Paddles, or Hands-Free Patches, Electrocardiogram Leads, Adult and Pediatric Appropriate Sizes
- Transcutaneous Cardiac Pacemaker, Appropriate for Adult and Pediatric
- Sufficient Medications to Satisfy Treatment










Next Level Hospital
and Healthcare Solutions
Transforming Healthcare - Solutions for change



Contact Us

 Biashara Bank Building,
Mezzanine Floor, Nyerere
Avenue, Mombasa

 info@nextlevelhhsolutions.com

 +254-710-290358

+1-845-406-2242

Company Directors

Zack Mukholi - Operations
zack.mukholi@nextlevelhhsolutions.com

Kalpna K. Das - Clinical Resources
kal.das@nextlevelhhsolutions.com

Lameck Nyakweba - Finance
lameck.nyakweba@nextlevelhhsolutions.com

Satheesh Babu - Engineering
satheesh.babu@nextlevelhhsolutions.com

Get In Touch

Get Business news, tip and solutions to
your problems from our experts.

Subscribe Now